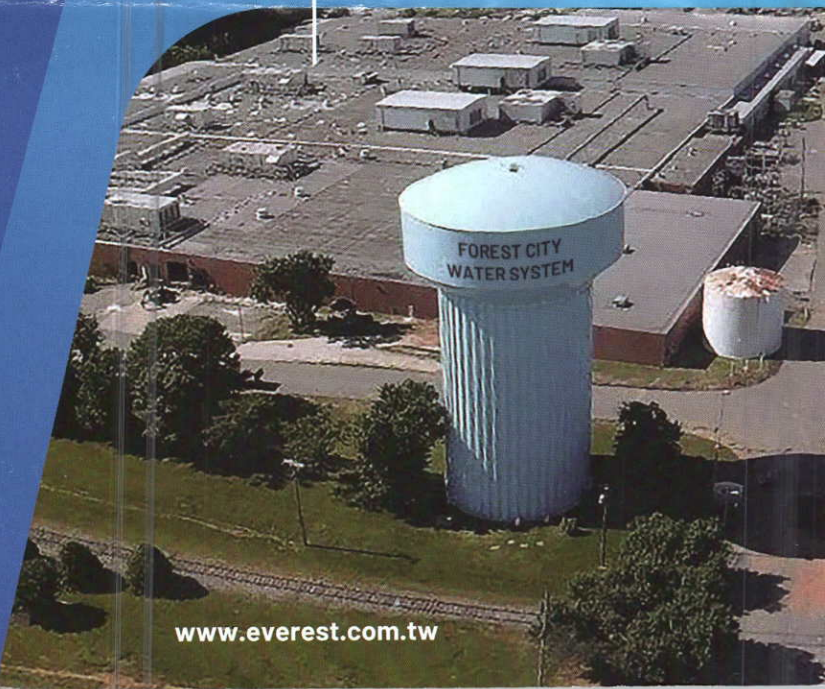


Everest Textile U.S.A. LLC

Textile Factory

100% Made in USA

Berry Compliant / CAFTA / USMCA



About Everest

Established: 2017

Employees:125

Located in Forest City

1 hour from the airport (CLT) to the factory

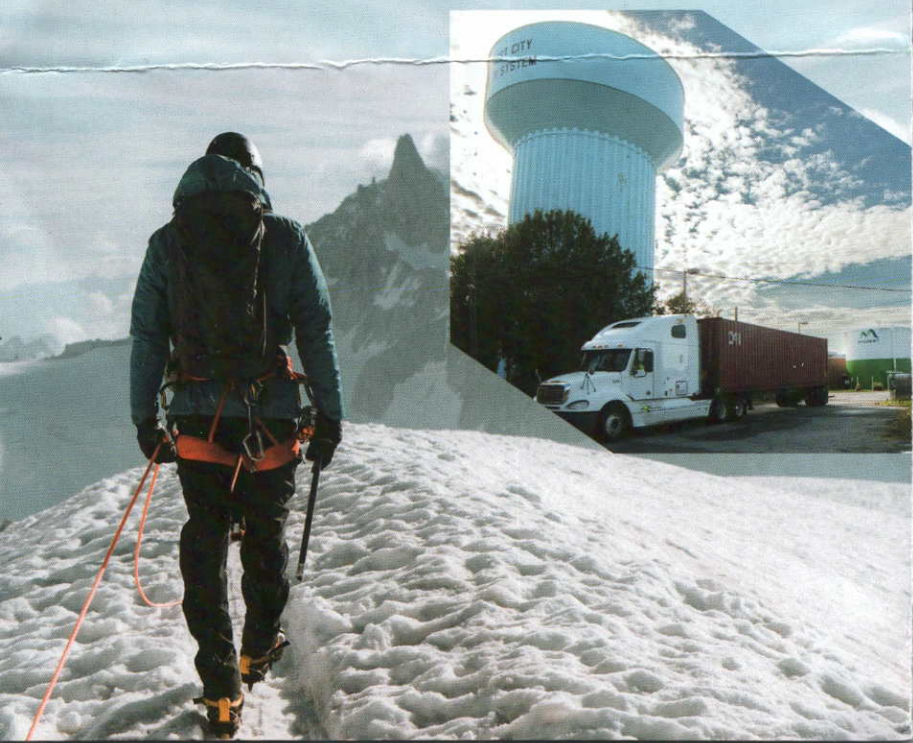
Land area: 52.59 Acres

Building area: 383,919 Sqft

Capacity: Fabric 2.0 million yard/month

Core Product : Fabrics (Woven, knit),

Military, Uniform & Industrial fabrics



Military & Protection

100% Berry Compliant

100% Made in USA

- Abrasion Resistant
- Weather Resistant
- Camoshield

Application:

- Military/ PT Uniform
- Medical material
- Work wear
- Hunting wear
- Bag fabric





Our Advantage

- Textile 100% Made in USA
- Vertical integration from yarn to fabric
- Localization Partnership
- Products to fit your needs
- Tariff Reduction



Business Partners

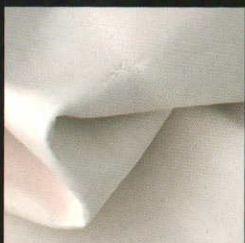


Urban Outdoor

- Nylon Stretch
- Double Weave

Application:

- Soft shell
- Rainwear jacket
- Down jacket
- Uniform, Work wear



Achievements



2017

Everest USA is Established

2017

Water-curtain Cooling System Operational

Water Recycling System Operational

2023

Received GRS Certification



2023

Received **NIKE (VCA & PQA)** Certification

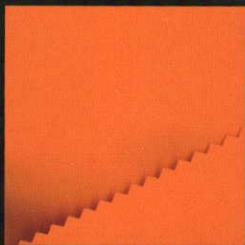


Functional Sports

- Polyester Stretch
- Soft Clima
- Mechanical Stretch

Application:

- Training and team sports
- Running shorts, jacket
- Golf pants & skirt
- Board shorts
- Light weight jacket
- Yoga



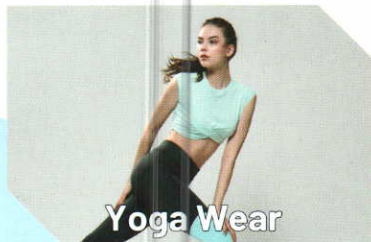
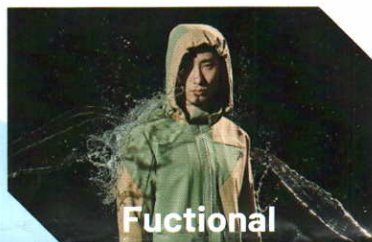
Fabric Core Products

- Performance Synthetic Fabrics in stretch and non-stretch
- Eco-fabrics made from recycled Nylon, recycled Polyester, PFCs Free Water Repellent Treatment Fabrics
- Piece Dyed Solid and Mélange

WOVENS	KNITS
2 Way, 4 Way Stretch	Single Jersey, Picque
Double Face	Double Knit, Interlock, Bird's Eye, Ponte
Cire	French Terry, Grid Fleece, Double Side Fleece
2-3 Layer Bonded	
Sublimation Print	



Application



Textile Mill Facility

Department	Facility (set)	Capability/month
Yarn texturizing	False Twist x 5	200 tons of polyester DTY
Woven weaving	Warping x 2	1.5 million yard
	Beaming x 1	
	Sizing x 1	
	Automatic drawing machine x 2	
	Water Jet x 219	
Knitting (Circular knit)	Double Knit x 10	0.5 million yard
	Fleece x 20	
	Single Jersey x 20	
Dyeing / Finishing	Setting Machine x 4	2.0 million yard
	Jet Dye Machine x 32	
Special Finishing	Calendar machine x 2	600,000 yard
	Dot lamination x 2	150,000 yard
	Sublimation Print x1	300,000 yard



CONTACT US



E : chuani.hsu@everest.com.tw

W : www.everest.com.tw

P : +1 828-245-6755 (Fabric Factory)

USA NC mill: 1331 West Main Street, Forest City, NC 28043