

YOUR COMPANY NAME HERE	Rev. No.	
	Page No.	
General Health and Safety Plan	Date:	

Project Contacts

CONTACT	NAME	PHONE
Con Edison Project Representative:		
Contractor/Vendor Project Manager:		
Con Edison Site Supervisor:		
Contractor/Vendor Site Supervisor:		
Con Edison EH&S Regional Representative:		
Contractor/Vendor Safety Officer:		

Emergency Services & First Responders

Emergency	NUMBER
Fire Emergency	911
Police Emergency	911
Medical Emergency	911

1.0 Scope of Work

1.1 Facade restoration at neighboring building (sharing property line with ConEd property)

KNS Building Restoration Inc. kindly requests to access ConEd property for the purpose of
Installing safety/protective equipment on ConEd premises to protect mechanical equipment

under working areas of 534 W 42nd street facade restoration.

Scope of work, site safety plan are all engineer-stamped and approved by NYC Department of Buildings.

Key Contact Persons:

Anthony Ballato, President NYC DOB GC 021579 - 917-807-0745

Daniel Sacco, Project Manager - 917-396-0005

YOUR COMPANY NAME HERE	Rev. No.	
	Page No.	
General Health and Safety Plan	Date:	

2.0 Hazard Identification and Risk Assessment

EH&S HAZARD ANALYSIS FOR CONTRACTOR WORK

Section	<i>Applicable to Project</i>	
	Yes	No
1.0 Introduction		
2.0 Air Resources		
3.0 Asbestos Awareness		
4.0 Bloodborne Pathogens Exposure Control Plan	X	
5.0 Chemical Safety and Handling		
6.0 Confined Space Program (Permit-Required)		
7.0 Electrical Safety	X	
8.0 Electrical Enclosed Spaces		
9.0 Excavation and Trenching		
10.0 Fish, Wildlife and Wetlands		
11.0 Fire Protection and Prevention		
12.0 Gas Enclosed Spaces		
13.0 Hazard Communication Program		
14.0 Hearing Conservation		
15.0 Insulation Materials (Non-Asbestos)		
16.0 Lead Management Program		
17.0 Management of Change		
18.0 Materials Handling		
19.0 Mechanical Equipment		
20.0 Mercury Management Program		
21.0 Noise		
22.0 Oil and Dielectric Fluid		
23.0 PCB Management		
24.0 Personal Protective Equipment	X	
25.0 Pesticide Use, Storage, and Disposal		
26.0 Respiratory Protection Program		
27.0 Sampling		
28.0 Vehicle Management		
29.0 Waste Management		
30.0 Water Resources		
31.0 Welding and Burning		
32.0 Work Area Protection (Traffic)		
33.0 Working at Elevations		
34.0 Drug and Alcohol Program	X	
35.0 FR Clothing	X	
36.0 Close Call Program	X	
37.0 Job Briefings	X	
38.0 Time Out Program	X	
39.0 Other (Lock Out/Tag Out)		
40.0 Rules We Live By	X	

YOUR COMPANY NAME HERE	Rev. No.	
	Page No.	
General Health and Safety Plan	Date:	

3.0 Job Briefing

3.1 The vendor’s supervisor is responsible for conducting a daily safety briefing (i.e. tailgate safety meetings) with all personnel. The daily safety briefing will occur at the beginning of the shift when daily assignments and project details are discussed. The daily safety briefings will review pertinent safety issues that may occur over the shift’s work and review results of safety inspections and accident investigations, including near miss occurrences. Number of briefings: if the work or operations to be performed during the workday are repetitive and similar, at least one (1) job briefing shall be conducted before the start of the first job of each day. Additional job briefings shall be held if significant changes, which might affect the safety of the employees during the course of the work. Daily job briefings will be conducted with all employees and subcontractors prior to the start of work each day. A review of the tasks planned for that day and any EH& S issues that may exist will be discussed.

4.0 Security

4.1 Contractors, vendors, service providers and all their employees authorized to access or to work in any Substation Operation Facilities are **Prohibited** from providing access to any person or persons into the Facility, including Con Edison employees. They must ensure that when entering or exiting a Substation Operation’s facility that no one uses that opportunity to access the facility. Any attempt by a person or persons to enter a Substation Operation’s facility witnessed by a contractor, vendor, service provider’s employee must be immediately reported their Substation Operation’s site contact individual, the Substation Supervision or Substation Station Operator. Failure to adhere to this directive can result in the immediate removal of the contract employee from working at a Con Edison facility of its property. Continued failure of complete compliance to this directive may result in the services of the contractor be discontinued.

5.0 Evacuation / Exit Corridors

5.1 Exit corridors must not be used for storage. The life safety code, NFPA 101, requires that buildings designed for human occupancy must have continuous and unobstructed exits to permit prompt evacuation of the occupants and allow necessary access for responding emergency personnel. The intent of the code is to keep exits free from obstructions and clear of combustible materials. Attention to housekeeping, therefore, is very important. Temporary storage of furniture, equipment, supplies, or anything else is not permitted in exit ways. Combustibles, including recyclable waste paper, are not permitted in exit ways.

5.2 Metal lockers with ends and tops ferried to the walls and that do not interfere with minimum exit width requirements may be installed in exit corridors when approved by the fire department and your company’s management

YOUR COMPANY NAME HERE	Rev. No.	
	Page No.	
General Health and Safety Plan	Date:	

When reporting a fire, call 911 and give the following information:

1. Your name and the phone number of the phone that you are calling from.
2. The address and location of the fire.
3. If there is anyone hurt.
4. The nature and extent of the fire (is it a paper fire?, a gasoline fire?, is the entire building burning or just one room?, is any one trapped?, is there an danger of explosions?)
5. Do not hang up until you are sure the other party has the information.
6. Evacuate personnel before attempting to extinguish the fire.

When reporting a medical emergency, call 911 and give the following information:

7. Your name and the phone number of the phone that you are calling from.
8. The address and location of the emergency.
9. If there is anyone hurt.
10. The nature and extent of the injury
11. Do not hang up until you are sure the other party has the information.
12. If this situation is safe, remain with the injured person
13. Send someone to the entrance to direct the First Aid Personnel.

6.0 Site Control

- 6.1 *Describe site control measures to be taken on the project (access points, security, barricades, fencing etc.).*
- 6.2 Prior to entering any substation, the operating authority shall be contacted and authorization granted prior to entry. Only authorized persons shall enter a substation; non-authorized persons must have an authorized escort.
 - 6.2.1.1 ·All necessary protection will be installed as deemed per each project.
 - 6.2.1.2 ·All Level One Employees and subcontractors will be clearly identified.
 - 6.2.1.3 ·The Site Manager will have proper notification of who will be on the job site at any given time, and will be advised of their location, including sub-contractors.
 - 6.2.1.4 ·Sub-contractors will be in hard hats (in the appropriate color) and wearing their company logo.
(Silk screen clothing is STRICTLY PPROHIBITED).
NO WHITE or BLUE HARD HATS.

7.0 Bloodborne Pathogen/First Air/CPR

- 7.1 Bloodborne pathogens (BBP) are pathogenic microorganisms that may be present in human blood and can cause disease in humans. These pathogens include, but are not limited to, hepatitis B virus (HBV) and human immunodeficiency virus (HIV). A source of occupational exposure may occur when an employee gives First Aid and CPR to an individual who has infectious blood. The occupational exposure occurs when there is the possibility for an employee's eyes, mucous membranes, non-intact skin (i.e.,

YOUR COMPANY NAME HERE	Rev. No.	
	Page No.	
General Health and Safety Plan	Date:	

cut and abraded skin) to come into contact with potentially infectious materials from another employee. Additional sources of exposure are contact with infectious waste found at project sites, glassware, needles and other sharp objects which have been involved in injuries to personnel and are contaminated with blood or related bodily fluids. Contractors shall report all injuries/illnesses immediately to the CON ED representative, regardless of the severity.

- 7.2** For any serious injury, contractors shall call the local emergency contact number or 911 as appropriate.
- 7.3** All jobsites will be equipped with First Aid Kits and Blood Borne Pathogen kits. If there is a reasonably anticipated contact with any potentially infectious materials, the contractor's **written** BBP Exposure Control Plan must be available to all contractor and ConEdison personnel for review upon request.
- The Exposure Control Plan must include procedures for:
 - ✓ Exposure determinations;
 - ✓ Methods of compliance;
 - ✓ HBV vaccinations and post-exposure evaluation and follow-up;
 - ✓ Communications of hazards to workers;
 - ✓ Worker training.
- 7.4** Universal precautions (i.e., treat all potentially infectious material as if it were infected) must be used at all times.
- 7.5** Proper PPE must be used at all times when there is a chance for exposure to infectious materials.
- 7.6** Hand-washing facilities or products (antiseptic hand cleaner, etc.) must be readily available to all employees.
- 7.7** All infectious material must be placed in appropriate, labeled containers (sharps containers, biohazard bags, etc.) and disposed of properly.
- 7.8** All infected equipment and surfaces must be decontaminated with an appropriate disinfecting solution prior to reuse.
- 7.9** All employees with a reasonable risk for exposure must attend appropriate training.
- 7.10** All required records for exposed employees must be kept confidential.
- 7.11** No exposure to blood borne pathogens (BBP) is expected during the normal course of work in this EHASP. Contractor employees working under this EHASP will be trained in basic first aid and be knowledgeable in the proper handling and disposal of infectious waste.
- 7.12** Notification of injuries will be made immediately to the CON ED Representative who will in turn notify the Safety Department. BBP spills will be reported immediately to the CON ED Environmental Services Department.

YOUR COMPANY NAME HERE	Rev. No.	
	Page No.	
General Health and Safety Plan	Date:	

7.13 For additional information regarding BBP requirements or clarification of these requirements, contact the New York regional OSHA office or visit the OSHA web site at: www.OSHA.gov

8.0 Electrical Safety

- 8.1** Electrical safety is an important component to any safety program. To minimize personal injury from contact with energized sources, workers must be trained in the fundamentals of electrical safety to minimize the potential of personal injury from contact with energized sources. All electrical hazards on a project must be identified and corrected. Only properly licensed electricians may perform any electrical work on ConEdison projects.
- 8.2** No electrical equipment shall be used on or around live gas lines.
- 8.3** Workspaces, walkways, and similar locations must be kept free of electric cords and tools.
- 8.4** Equipment shall not be stored around electrical cabinets in such a manner that it might prevent or impede access.

Workers must inspect all electrical equipment, including extension cords, for the following hazards:

- Missing ground pins on plugs (except double-insulated);
 - Insulation pulled free from plugs or support connections;
 - Damaged insulation;
 - Exposed wires;
 - Evidence of arcing, sparking, or smoking;
 - Proper rating of extension cords; and
 - Splices and/or taps, both of which are prohibited on extension cords.
- 8.5** When any conditions are identified on equipment that makes it unsafe to operate, the equipment must be removed from the site until repaired by a qualified person. Flexible cords must be suitable for the condition and location of use and must be used as appropriate.
- 8.6** Three-wire extension cords must be used and must be rated for hard or extra-hard use. Power tools will be inspected prior to use. Any equipment showing cords with cuts or frays will be immediately tagged out of service and repaired or discarded.
- 8.7** Extension cords must not be fastened with staples, hung on nails, or suspended on wires. **ALL** electrical equipment used on a project (hand tools, etc.) must be protected with a ground-fault circuit interrupter (GFCI).
- 8.8** Workers must be trained in the safety-related work practices that pertain to their job and cannot work near electrical hazards without training to recognize and avoid the hazard. All electrical facilities located in trenching/excavations and underground structures shall be considered live until ConEdison representative confirms facility is de-energized. All workers

YOUR COMPANY NAME HERE	Rev. No.	
	Page No.	
General Health and Safety Plan	Date:	

who perform work on energized electrical equipment shall be trained in their requirements of 1910.269.

- 8.9** All underground utilities must be marked prior to any groundbreaking activities. Only qualified, trained workers may test electrical equipment. When working on energized equipment, a lockout/tagout program shall be specified to verify that the equipment is de-energized. Materials must not be stored in transformer vaults. AC and DC wiring systems must be properly grounded. The potential for stray voltage must be assessed and corrected if present. Proper clearance from overhead power lines must be maintained at all times as directed (OSHA, CON ED policies and procedures). The regulation, policy, or procedure that affords the employee the greatest protection shall be followed. Cradle to cradle policy is in effect at ConEdison. Employees shall be dressed for the greatest hazard (i.e. prior to un-cradling the bucket, the employee shall don gloves and sleeves for work that is planned to be completed in the vicinity of primary conductors). Use of mechanical equipment within substation properties shall follow Substation Work Procedures at all times. Mechanical equipment shall be operated so that the required clearance distances are maintained for exposed energized lines and equipment. Personal protective equipment used by electrical workers must be appropriate and in good condition.
- 8.10** When handling or working on any wire or equipment that is energized or may become energized at 50 volts or more, rubber protection equipment shall be used in accordance with work and safety procedures.

The following clearances shall be followed at all times while working near electric power lines and energized sources by non-qualified employees with the exception noted in:

“Use of Electrical Mechanical Equipment within Substation Properties and Substation Work Procedure SP-0110” or most recent procedure.

YOUR COMPANY NAME HERE	Rev. No.	
	Page No.	
General Health and Safety Plan	Date:	

TABLE 1
STATION WORK MINIMUM
APPROACH DISTANCES

<u>VOLTAGE</u>	Unqualified Personnel Working Near Exposed Energized Parts	Qualified ¹ Personnel Working Near Exposed Energized Parts
< 301 V	3' 4"	Avoid Contact
480 V	3' 4"	1' 1"
4 kV	3' 4"	2' 1"
13 kV	3' 6"	2' 2"
27 + 33 kV	4'	2' 7"
69 kV	4' 11"	3' 4"
138 kV	6' 8"	4' 7"
230 kV	9' 4"	6' 3"
345 kV	14' 8"	9' 6"
500 kV	22' 10"	12' 3"

TABLE 2
VEHICLE AND MECHANICAL EQUIPMENT
CLEARANCE DISTANCE

<u>VOLTAGE</u>	Qualified Personnel Operating Grounded Equipment With a Designated Watcher	Unqualified Personnel Operating Grounded Equipment	All Personnel Moving Ungrounded Equipment W/Aerial Structure Lowered With a Designated Watcher
4 kV	2' 1"	10'	6'
13 kV	2' 1"	10'	6'
27 kV	2' 4"	10'	6'
33 kV	2' 4"	10'	6'
69 kV	3'	15'	10'
138 kV	3' 7"	15'	10'
230 kV	5' 3"	20'	10'
345 kV	8' 6"	20'	10'
500 kV	11' 3"	25'	16'

YOUR COMPANY NAME HERE	Rev. No.	
	Page No.	
General Health and Safety Plan	Date:	

9.0 Materials Handling

- 9.1** Due to the various size, shape and weight of workplace materials, the means of moving them can vary greatly from one situation to the next. The required method may range from manual carrying by hand or lift truck to usage of cranes and complex rigging methodologies. Regardless of the methods employed, all types of material handling operations require adequate planning and preparation that are clearly defined to ensure the task is completed in a safe manner.
- 9.2** **Operations near overhead power lines are prohibited unless the power source has been shut off and locked out/tagged out or the appropriate clearance distances are maintained in accordance with OSHA regulations and ConEdison policies and procedures.**
- 9.3** Whenever possible, objects will be lifted and moved by mechanical devices (cranes, manually operated chain hoists, fork trucks, etc.) rather than by manual effort.
- 9.4** The mechanical devices will be appropriate for the lifting or moving task and will be operated only by trained and authorized personnel.
- 9.5** Objects that require special handling or rigging will only be moved under the guidance of a person who has been specifically trained to move such objects. Lifting devices will be inspected, certified, and labeled to confirm their weight capacities. All devices shall be inspected before each use by the user for obvious signs of damage, wear, and failure.
- 9.6** Defective equipment shall be tagged/marked to identify it as such and is immediately taken out of service and repaired or destroyed. Personnel will not pass under a raised load, nor will a suspended load be left unattended. The work area shall be secured to ensure that individuals cannot walk near or underneath loads that are being lifted or moved.
- 9.7** Personnel will not be carried on lifting or hoisting equipment, unless it is specifically designed to carry passengers.
- 9.8** The wheels of the trucks or vehicles that are being loaded or unloaded shall be chocked to prevent inadvertent movement.
- 9.9** The lift and swing path of a crane will be watched and maintained clear of obstructions. Accessible areas within the swing radius of a crane will be guarded or barricaded. All reciprocating, rotating, or other moving parts will be guarded at all times in accordance with manufacturer recommendations and OSHA regulations. Accessible fire extinguishers must be available in the immediate proximity of all mechanical lifting devices.
- 9.10** Lifting devices will never be left near the edge of excavations or unstable areas. Mobile lifting equipment, equipped with outriggers shall be positioned and the outriggers deployed and secured before any lifting or hoisting work is begun. Cranes may only be moved when directed by a qualified signal person. Wire ropes will be removed from service when any abrasion, scrubbing, evidences of corrosion, kinking, crushing, bird caging,

YOUR COMPANY NAME HERE	Rev. No.	
	Page No.	
General Health and Safety Plan	Date:	

or other damage exists. Only trained, authorized individuals shall be permitted to operate fork trucks.

- 9.11** Unsafe behavior while driving a fork truck is not permitted. Each fork truck will be provided with an overhead guard. All mobile lifting devices shall be equipped with an audible backup warning device. All traffic regulations shall be observed when a lifting device is in operation. Employees involved in heavy lifting will be properly trained in lifting procedures and should be physically qualified to protect the person and the material. Tiered or stacked material will be stored within acceptable height limits to avoid tripping, falling or collapse.
- 9.12** Personnel will be trained in the procedures used for material handling. This training will address the requirements of applicable regulations, for example the training of personnel who operate powered industrial trucks.
- 9.13** All material handling, including lifting and hoisting equipment, will be used as designed by the manufacturer.

10.0 Personal Protective Equipment

- 10.1** For many tasks, personal protective equipment (PPE) is as essential to the job as any tool. OSHA requires that every employer evaluate all tasks associated with a project to determine the hazards associated with these tasks and the appropriate PPE to be worn by each employee. As is always the case with PPE, it shall only be used when engineering and administrative controls are not adequate to address the potential hazard.
- 10.2** **Minimum PPE required for all work activities: hard hat, safety glasses with side shields, safety toe boots, FR or natural fiber clothing without silk screening.**
- 10.3** All employers must conduct a hazard assessment prior to the start of every project and as conditions change on the project to determine the types of PPE necessary for each task.

All workers must be trained in the following:

- Recognizing the need for PPE
- Types of PPE necessary
- Proper use of PPE
- Limitations of PPE
- Proper care of PPE
- Disposal of PPE
- Inspection of PPE
- Proper donning and doffing of such equipment to ensure adequate fit.

- 10.4** All PPE used must meet applicable American National Standards Institute (ANSI) standards. All PPE shall be maintained and stored in a sanitary

YOUR COMPANY NAME HERE	Rev. No.	
	Page No.	
General Health and Safety Plan	Date:	

manner that protects it from deterioration, degradation or damage. In situations where workers provide their own PPE, it shall be the responsibility of the contractor to ensure that such equipment is adequate in both quality and quantity and that it is stored and maintained in a sanitary, safe manner.

- 10.5 *Hard Hats*** – required for all construction work activities when outside of the protection of a vehicle. These include roadway work zones, in substations, on construction sites, in field work locations, when performing overhead hoisting operations and any time there is a potential hazard to the head. Exceptions would include operators positioned inside the cab of equipment. The hard hat shall be worn in the forward direction. Contractor employees are not permitted to wear ConEdison Utilities hard hats. Hard hats must comply with ANSI Z89.1-2003 or latest version. **NOTE:** Welders may be permitted to perform welding tasks without the protection of a hard hat **only when all overhead hazards have been eliminated.** Once the welding operations have been completed, a hard hat must be donned. ****Hard hats shall never be changed or modified in any way that compromises the intended performance of the hard hat.**
- 10.6 *Safety glasses/goggles/face shield*** – required for all construction work activities when outside the protection of a vehicle. Safety glasses must be ANSI Z-87.1 compliant (latest published date). All safety eyewear must have side shields attached at any time safety eyewear is required effective January 1, 2012. Face shields are required during any hiping and grinding operations etc.
- 10.7 *Class 2 reflective garments*** – Class 2 High Visibility reflective garments, at a minimum, construction equipment. Garments must be FR if performing hot work or when working with live gas or in proximity to electric energy.
- 10.8 *Safety shoes*** – required during all job operations meeting standards in ANSI Z41.1 or ASTM 2412 or 2413 ****Metatarsal protection is required when jack hammering**
- 10.9 *Fire Retardant work clothes (with long sleeves)*** - Contractor employees shall wear flame retardant (FR) clothing when performing tasks that may expose them to the hazards of flame or electric arc. Employees are required at a minimum to wear 100% natural fiber (wool or cotton) clothing, including undergarments; elastic undergarment waist bands are acceptable. In all cases, the outermost layer of clothing shall be FR if exposed to hazards of arc or flame. The use of clothing containing polyester, nylon, rayon, and acetate (alone or in blends) which are not FR treated and/or rated, or having silk screening is strictly prohibited for field work activities at ConEdison sites. Silk screened T-shirts are not permitted to be worn at any time. When there is a potential exposure to electric arc or gas flame, employees will have appropriate FR clothing on. Shirts will be buttoned up, tucked in, and the sleeves rolled down and buttoned up. **NOTE:** HRC 1 FR rated clothes cannot be worn alone while in the Minimum Approach Distance (MAD) to electric energy or in areas with potential for gas flash fire. The minimum FR protection required when working in the MAD or with live gas is HRC 2. In

YOUR COMPANY NAME HERE	Rev. No.	
	Page No.	
General Health and Safety Plan	Date:	

those situations, an outer layer of FR clothing with an HRC 2 rating must be worn.

- 10.10 Welders chaps and aprons** – required during all pipe torch cutting and welding operations
- 10.11 Welder’s glasses, goggles, shields** – required during all pipe torch cutting and welding operations
- 10.12 Hearing protection** – when using power tools or in areas that exceed 85 dB (i.e. chainsaw, chipping, etc.) Hearing protection is required when closing a cutout/fuse.
- 10.13 Respiratory Protection-** (Medical approved and fit tested employees only) ½ face respirator, full face respirator, SCBA, Airline Respirator. Respiratory Protection may be required as deemed appropriate when outlined in procedures required to perform job scope, some examples include: catching gas on the fly, rock drilling, concrete abrasive cutting, etc. Fit Test cards are required to be carried by all fit-tested employees while onsite.
- 10.14 Work gloves** – at minimum, workers will wear leather-palmed heavy cotton work gloves. Other hand protection shall be appropriate for work function performed (i.e., welders gloves with gauntlets, riggers gloves, rubber gloves, sleeves, fire gloves etc.) **Emergency rescue equipment, such as breathing apparatus, a safety harness and line, or a basket stretcher, shall be readily available where hazardous atmospheric conditions exist or may reasonably be expected to develop during work in an excavation. This equipment shall be attended when in use.
- 10.15 Fall Protection** – Fall protection is required for any work which exposes an employee to a potential fall of 4 feet or greater.
- 10.16 Chaps-** are required to be worn while operating a chainsaw or demo saws on the ground.
- 10.17 Other PPE** - Poly-coated coveralls, booties; protective glove, etc. may be required per CON ED Procedure or as specified in SDS. **Depending on the work being performed, additional PPE may be required. This determination shall be made by the qualified contractor representative as part of the pre-work hazard assessment. Such PPE may include gloves, footwear, eye protection, face protection and/or head protection, blowing gas suit etc. Protective clothing (reusable or disposable) must be appropriate for the type of work being performed.

11.0 Close Call Program

- 11.1** The purpose of this Close Call Program is to establish a process that enables employees to report hazards, unsafe conditions and/or unsafe behavior that had a potential to result in injuries or property damage. The goal of our company is to achieve an injury free workplace. To help achieve this goal, it is necessary for every employee to participate. One of the strategies is the Close Call program, which has been established to provide a means for employees to openly communicate safety concerns without disciplinary action. Our company’s employees are encouraged to identify and report situations that they believe may lead to a potential injury, or that represent

YOUR COMPANY NAME HERE	Rev. No.	
	Page No.	
General Health and Safety Plan	Date:	

conditions that need to be corrected. Employees will contribute to creating a safe workplace by actively promoting an atmosphere in which safety concerns are openly discussed in a constructive manner. Employees should openly discuss safety issues within their work teams, encourage their co-workers to work safely and actively and openly communicate with their supervisors and upper Management on any safety issue. A close call can be submitted in writing or verbally to their supervisors, safety specialist of owner of the company. All close calls identified on Con Edison projects shall be communicated to Con Edison.

12.0 Time Out Program

12.1 All vendor employees shall follow the procedure mandated by Con Edison that requires personnel, contractors and its employees understand the Con Edison Time Out program. Either Con Edison or the vendor’s supervisor will stop work if there is a question of safety or environmental issue that cannot be resolved between the employee and foreman. Work will immediately stop and a Con Edison Representative will be notified. Work will not resume until a resolution has been reached.

13.0 Management of Change

13.1 The vendor shall promptly stop work and notify the Con Edison Site Representative if there are any changes in the scope of work where this HASP no longer applies. We are prepared to address changes such as weather conditions affecting our employee safety, and building security. In addition, our Personal Protective Equipment requirements that are in the plan do not preclude Management from increasing or decreasing levels of protection. All subcontractors shall receive a copy of this Site Specific HASP and shall agree to follow the HASP. The prime contractor shall have the ultimate responsibility for implementing management of change procedures relative to the project.

14.0 Spill Reporting

14.1 Any oil or chemical spill must be reported **IMMEDIATELY** to the Control Room and the Con Edison site representative. No chemicals, water, oil or other material shall be poured or otherwise allowed to enter the Station’s trench and sump system. If any material enters the trenches or sumps, the source of the material must be immediately controlled and the Control Room must be immediately notified. A spill of any substance or other impact to the station's roadways, outfalls or surrounding water ways must be reported to the Control Room and site representative immediately. Preventative measures will be implemented and care will be taken to prevent oil and chemical spills.

15.0 Rules We Live By

15.1 Con Edison has initiated a program of Rules We Live By. The purpose of establishing this new class of Rules is to put a spotlight on those few critical work procedures or safety requirement that, if not followed, could result in a severe injury or fatality, or place other individuals (employees, contractors, or members of the public) at significant risk. The vendor will comply with all

YOUR COMPANY NAME HERE	Rev. No.	
	Page No.	
General Health and Safety Plan	Date:	

provisions of the RWLB and has trained all employees on the applicable rules and reporting procedures. It is still important to follow all procedures, however, the Rules We Live By leave no room for non-compliance and failure to adhere to them will result in significant mandatory discipline for both the employee and the employee's company. A violation by a vendor employee will be reported via an Action Line. If you see a violation occurring or about to occur, stop the work and notify your Contract Administrator. If necessary, use the Time Out process. It's your responsibility not to look the other way. A copy of the most current RWLB chart is attached.

16.0 Coronavirus (COVID-19) Work Plan

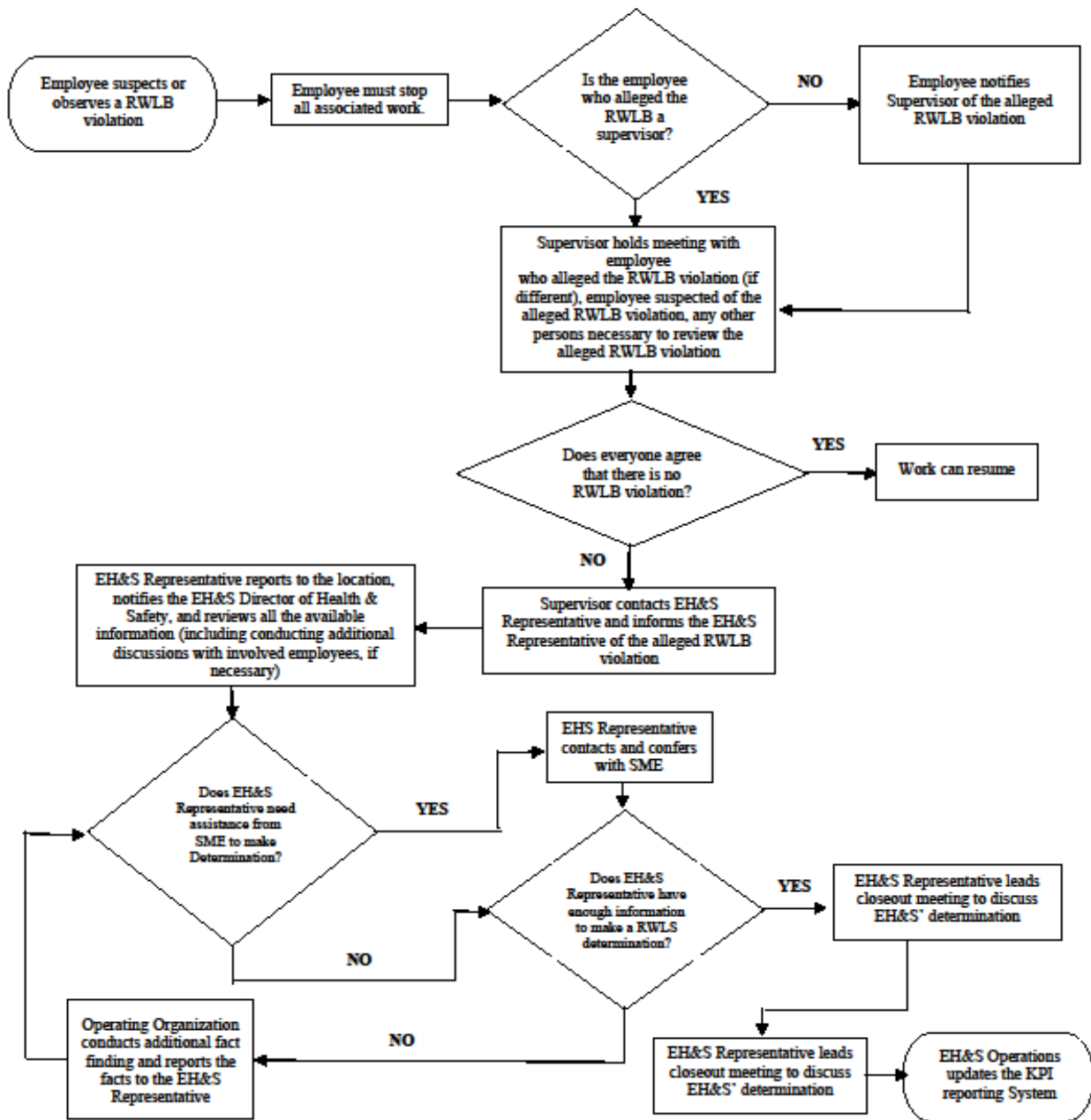
16.1 All Company vendors whose employees provide services in our facilities, worksites, or who will otherwise interact with Company personnel, must follow the guidelines provided by the Centers for Disease Control and Prevention (CDC). In addition, vendors must develop a written Safety Plan outlining how its workplace will prevent the spread of COVID-19. The vendor may fill out the NY Forward Safety Plan template to fulfill the requirement or may develop its own Safety Plan and attach it to the HASP.

General Health and Safety Plan

Hazard	Electric Operations	Central Operations	Gas Operations	Customer Operations	Utility Shared Services
Verify Dead/Lochout-Tag Out	<p>Properly test or repair to ensure that electric equipment, cable, or wire is "dead" as required regardless of voltage, before beginning dead work activities.</p> <p>Enter D-Fault tagged structures only when authorized by the operating authority to perform feeder processing, or to perform work after all D-faults have been identified and de-energized.</p>	<p>Properly test or verify that equipment is de-energized, isolated and protected prior to initiating dead work activities.</p> <ul style="list-style-type: none"> Only perform work that is within the authorized scope of work as listed on the work permit. Do not change the status of a piece of equipment that has a Stop Tag applied to it. Follow the sequence of an operation order. 		<p>Conduct required testing following the proper procedure for work on metering equipment</p> <p>Do not enter a structure that has been declassified and tagged as a D-bulk.</p>	<p>Properly lock out equipment before beginning work on the equipment. (When not intentionally live and PPE is required)</p> <p>Only perform work that is within the authorized scope of work as listed on the work permit</p>
Permits (Operating, D-faults)	<ul style="list-style-type: none"> Perform air monitoring and ventilate as required for entry and work in an enclosed space or a permit-required confined space. For excavations greater than 4 feet in depth the atmosphere shall be tested prior to entry or when the excavation is not already occupied. 	<ul style="list-style-type: none"> Perform air monitoring and ventilate as required for entry and work in an enclosed space or a permit-required confined space. For excavations greater than 4 feet in depth the atmosphere shall be tested prior to entry or when the excavation is not already occupied. 	<ul style="list-style-type: none"> Perform air monitoring and ventilate as required for entry and work in an enclosed space or a permit-required confined space. For excavations greater than 4 feet in depth the atmosphere shall be tested prior to entry or when the excavation is not already occupied. 	<p>Perform air monitoring and ventilate as required for entry and work in an enclosed space or a permit-required confined space.</p>	<p>Perform air monitoring and ventilate as required for entry and work in an enclosed space or a permit-required confined space.</p>
Atmospheric Testing	<ul style="list-style-type: none"> Perform air monitoring and ventilate as required for entry and work in an enclosed space or a permit-required confined space. For excavations greater than 4 feet in depth the atmosphere shall be tested prior to entry or when the excavation is not already occupied. 	<ul style="list-style-type: none"> Perform air monitoring and ventilate as required for entry and work in an enclosed space or a permit-required confined space. For excavations greater than 4 feet in depth the atmosphere shall be tested prior to entry or when the excavation is not already occupied. 	<ul style="list-style-type: none"> Perform air monitoring and ventilate as required for entry and work in an enclosed space or a permit-required confined space. For excavations greater than 4 feet in depth the atmosphere shall be tested prior to entry or when the excavation is not already occupied. 	<p>Perform air monitoring and ventilate as required for entry and work in an enclosed space or a permit-required confined space.</p>	<p>Perform air monitoring and ventilate as required for entry and work in an enclosed space or a permit-required confined space.</p>
Rescue/Retrieval	<p>Entrant and attendant are required to wear rescue harness when working in enclosed spaces.</p>	<p>Entrant and attendant are required to wear rescue harness when working in enclosed spaces.</p>	<p>Entrant and attendant are required to wear rescue harness when working in enclosed spaces.</p>	<p>Entrant and attendant are required to wear rescue harness when working in enclosed spaces.</p>	<p>Entrant and attendant are required to wear rescue harness when working in enclosed spaces.</p>
High Hazard Energy PPE	<ul style="list-style-type: none"> Use fall protection equipment as required. Use appropriate rubber gloves with protective gauntlets, rubber sleeves, fire retardant clothing and eye/protection/face shield as required for the electrical hazard. 	<ul style="list-style-type: none"> Use fall protection equipment as required. Use appropriate rubber gloves, rubber sleeves, fire retardant clothing, and eye protection/face shield as required for the electrical hazard. In Steam Distribution, use appropriate water resistant coveralls and face shields before disconnecting any piping from the dead side of the trap valve up to and including the trap isolatives and trap bypass valve. These coveralls and face shields must be worn until all piping is reconnected. 	<ul style="list-style-type: none"> Use fall protection equipment as required. Wear a flame respirator, FR coveralls, FR hood & FR gloves or leers as required by P-42 	<ul style="list-style-type: none"> Use fall protection equipment as required. Use appropriate rubber gloves with protective gauntlets, rubber sleeves, fire retardant clothing, and eye protection/face shield as required for electrical hazard. Do not come into contact or move a downed or low hanging utility wire while performing Site Safety or Damage Assessment work 	<ul style="list-style-type: none"> Use fall protection equipment as required. Use the appropriate rubber gloves, rubber sleeves, fire retardant clothing, and eye protection/face shield as required for the electrical hazard
Sheeting/Shorting	<p>Ensure that excavations the feet or deeper are properly shielded and stored before anyone enters.</p>	<p>Ensure that excavations the feet or deeper are properly shielded and stored before anyone enters.</p>	<p>Ensure that excavations the feet or deeper are properly shielded and stored before anyone enters.</p>		
Gas Piping Integrity Test		<p>Perform an integrity test before a customer turn-on.</p>	<p>Perform an integrity test before a customer turn-on.</p>	<p>Perform an integrity test before a customer turn-on.</p>	
Securing Loads					<p>Reels over 5,000 lbs (individually or when bundled together) are secured per NYS Metal Code requirements</p>

YOUR COMPANY NAME HERE	Rev. No.	
	Page No.	
General Health and Safety Plan	Date:	

**ATTACHMENT 2
RWLB PROCESS FLOWCHART**

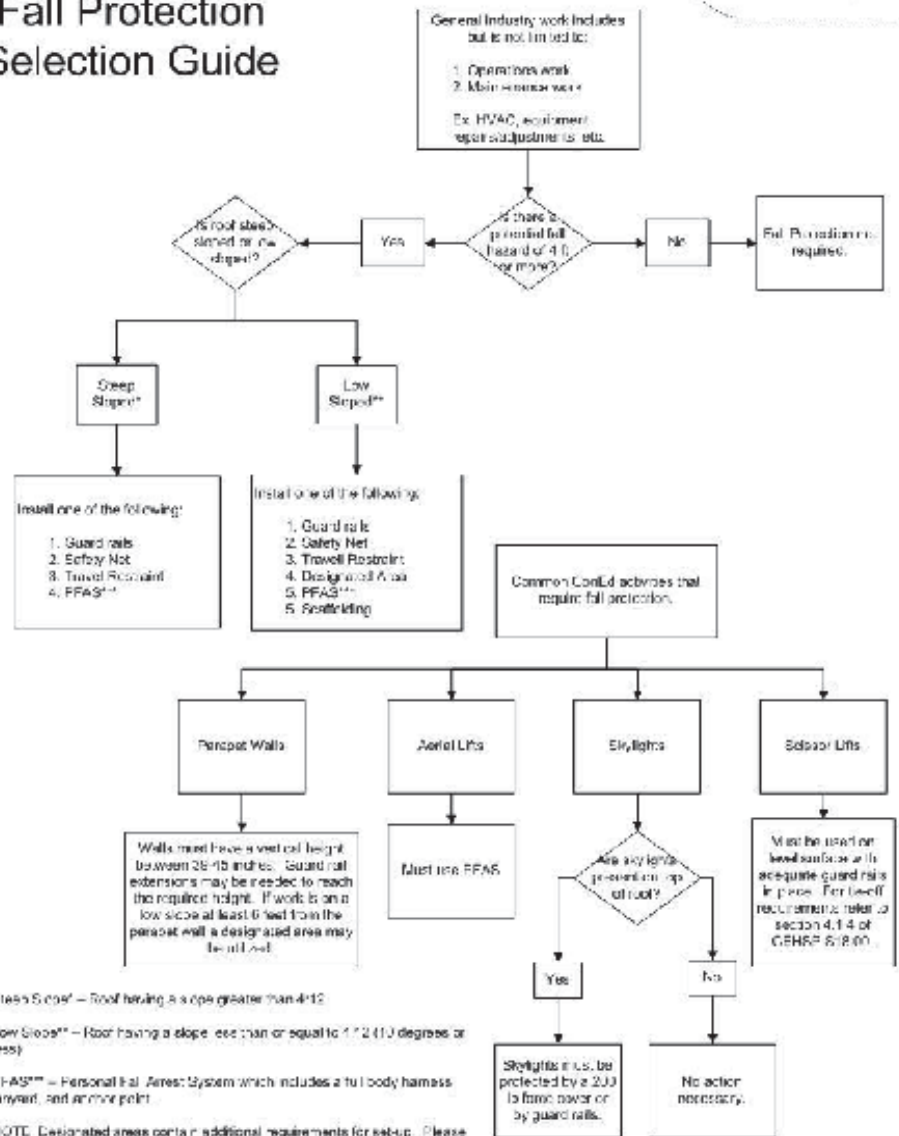


YOUR COMPANY NAME HERE	Rev. No.	
	Page No.	
General Health and Safety Plan		Date:

ATTACHMENT 2

GENERAL INDUSTRY Fall Protection Selection Guide

Please use this only as a guide for selecting fall protection systems. For additional questions contact your local EHS Representative or the Corporate EHS Representative EMM.



YOUR COMPANY NAME HERE	Rev. No.	
	Page No.	
General Health and Safety Plan		Date:

ATTACHMENT 3

CONSTRUCTION Fall Protection Selection Guide

PFASSM – Personal Fall Arrest System which includes a full body harness, lanyard and anchor point.

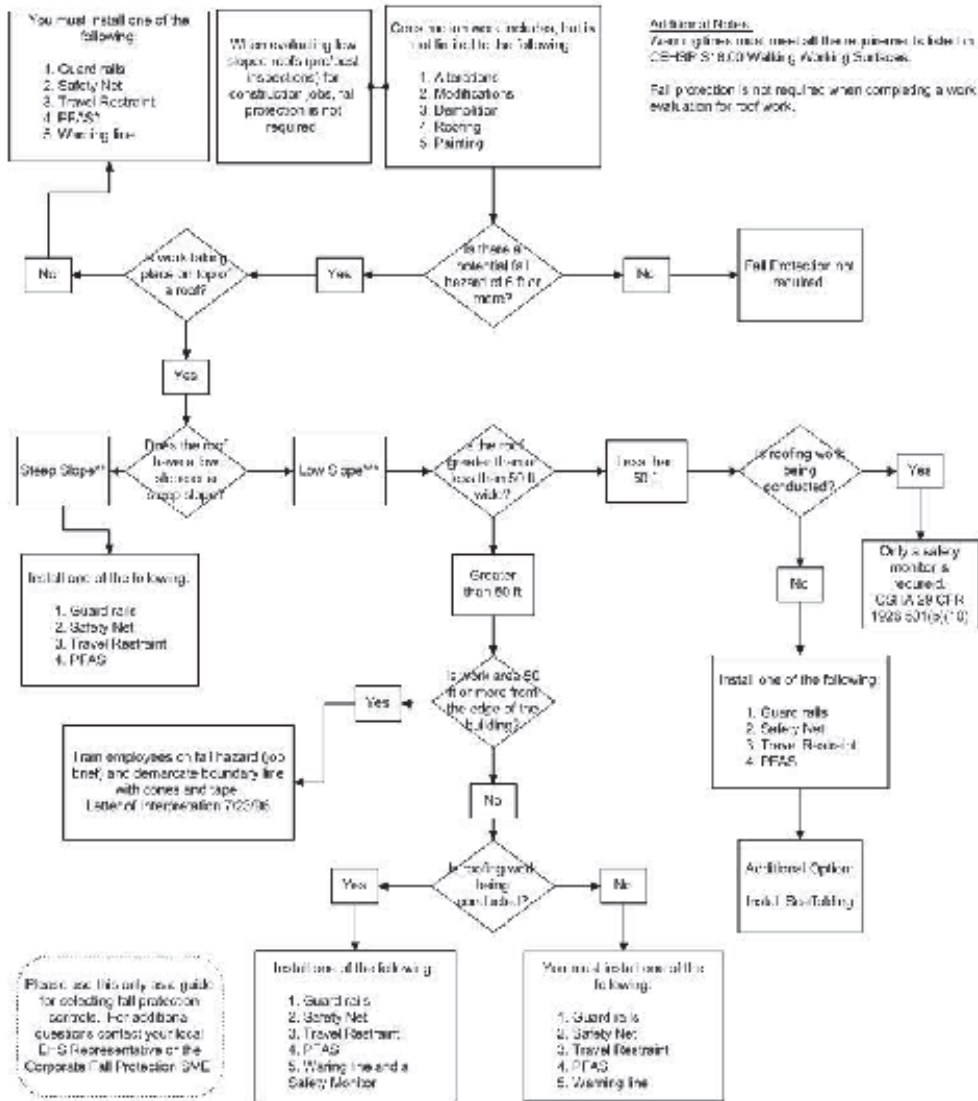
Steep SlopeSM – Roof having a slope greater than 4:12.

Low SlopeSM – Roof having a slope equal to or less than 4:12 (10 degrees or less).

Additional Notes:

Working lines must meet all the requirements listed in CEHSP S18.00 Walking Working Surfaces.

Fall protection is not required when completing a work evaluation for roof work.



YOUR COMPANY NAME HERE	Rev. No.	
	Page No.	
General Health and Safety Plan	Date:	