

SPRINKLER & SMOKE DETECTOR SYSTEM GENERAL NOTES-NYC

- THESE PLANS ARE SUBMITTED FOR: THE ENTIRE BUILDING.
- BUILDING DEPARTMENT DOCUMENTS:
PW-1 FOR ALT. TYPE II
#
- FIRE DEPARTMENT DOCUMENTS FILED:
BUILDINGS DEPT. FORM PW-1
APPLICATION FOR PLAN EXAMINATION
- SYSTEM TYPE: ANALOG-ADDRESSABLE
- B.S. & A. OR M.E.A. CAL.
#
- ELECTRIC SERVICE: (X) STREET SIDE

- HVAC SHUTDOWN: (X) PROVIDED AS PER RS13-1 ART.
4.3
() N/A
- RE-ENTRY STAIRS: (X) UNLOCKED ALL THE TIME
() STAIR LOCKING WITH FAIL-SAFE
LOCKS CONNECTED TO THE FIRE COMMAND STATION AND ELEVATOR RECALL
- SPRINKLER SYSTEM: (X) COVERS THE ENTIRE BUILDING
() COVERS PART OF THE BUILDING
(X) WATERFLOW SWITCHES, TAMPER SWITCHES
() GRAVITY TANK HIGH AND LOW ALARMS
() PRESSURE TANK ALARMS
- SMOKE DETECTION SYSTEM: () CROSSED-ZONED IN ELEVATOR LOBBIES
() CROSSED-ZONED IN ELEVATOR MECH. ROOMS
(X) DETECTORS IN ALL OTHER MECHANICAL & ELECTRICAL ROOMS OVER 75 SQ. FT.
(X) DETECTORS ON TOP OF STAIRCASES
(X) AREA SMOKE DETECTORS IN TENANT SPACES
() OTHER:
- ELEVATOR RECALL: () WITH LOBBY KEY SWITCHES-PHASE I
() WITH CAR KEY SWITCHES-PHASE II
() BY CROSS-ZONE ALARM OF ELEVATOR LOBBY SMOKE DETECTORS
(X) BY SPRINKLER WATERFLOW SWITCH(ES)

- BUILDING PRESENTLY OCCUPIED (X) NO

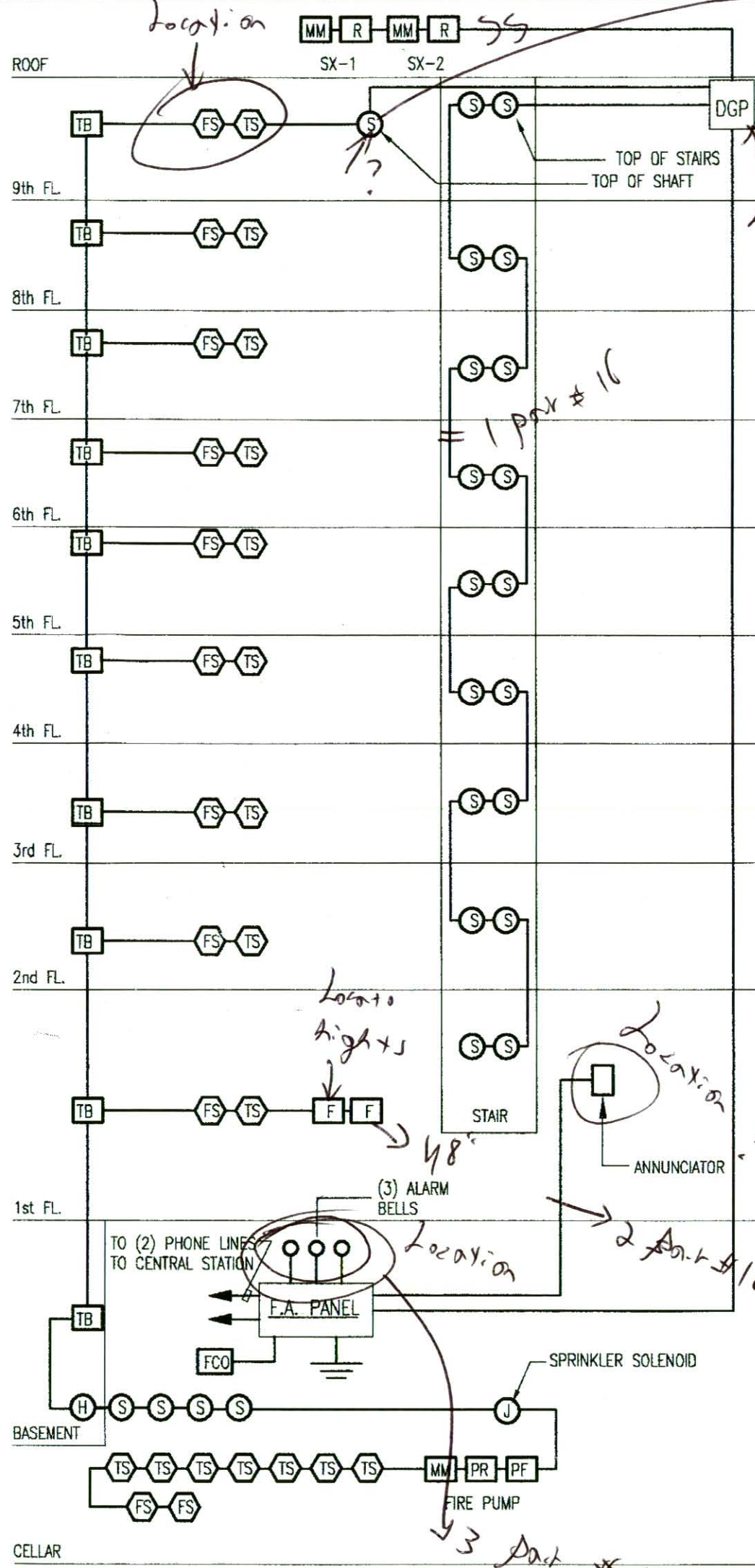
SEQUENCE OF OPERATION
SPRINKLER/SMOKE DETECTION FIRE ALARM SYSTEM

THE INTERIOR SPRINKLER, SMOKE DETECTOR, INTERIOR FIRE ALARM SYSTEM SHALL PERFORM ITS FUNCTION IN ACCORDANCE WITH N.Y.C. LOCAL LAWS AND ACCORDING TO THE NYC BUILDING CODE CURRENT VERSIONS OF NEW YORK CITY BUILDING CODE (INCLUDING DOB DIRECTIVES, RULES AND REGULATIONS AND POLICY AND PROCEDURE NOTICES), N.Y.C. FIRE DEPARTMENT FIRE PREVENTION CODE (INCLUDING FIRE PREVENTION DIRECTIVES, RULES AND REGULATIONS, ETC.) N.Y.C. ELECTRICAL CODE, NEW YORK STATE CODE, NATIONAL FIRE PROTECTION ASSOCIATION (NFPA) STANDARDS, AND ALL OTHER APPLICABLE REGULATIONS. THE FOLLOWING IS A BRIEF DESCRIPTION OF THE SYSTEM OPERATION:

- ACTIVATION OF MANUAL PULL STATION, AREA SMOKE OR HEAT DETECTOR:
 - DISPLAYS ACTIVATED DEVICE AT THE FIRE ALARM PANEL AND AT THE REMOTE ANNUNCIATOR.
 - ACTIVATES THE CENTRAL OFFICE TRANSMITTER TO NOTIFY THE FIRE DEPARTMENT.
 - SHALL RELEASE ALL ELECTROMAGNETIC DOOR LOCKS AND DOOR HOLDERS THROUGHOUT THE BUILDING.
- ACTIVATION OF AN ANALOG ADDRESSABLE ELEVATOR MACHINE ROOM SMOKE DETECTOR:
 - DISPLAYS ACTIVATED DEVICE AT THE FIRE ALARM PANEL AND AT THE REMOTE ANNUNCIATOR.
 - ACTIVATES THE CENTRAL OFFICE TRANSMITTER TO NOTIFY THE FIRE DEPARTMENT.
 - RECALLS THE ELEVATOR SERVING THE BUILDING TO A DESIGNATED RECALL FLOOR (TYPICALLY TO THE STREET LEVEL, SUBJECT TO FIRE COMMISSIONER'S APPROVAL).
 - SHALL RELEASE ALL ELECTROMAGNETIC DOOR LOCKS AND DOOR HOLDERS THROUGHOUT BUILDING.
- ACTIVATION OF A SPRINKLER SYSTEM WATERFLOW SWITCH:
 - SAME AS ITEM 1 ABOVE.
- ACTIVATION OF A SPRINKLER SYSTEM TAMPER SWITCH:
 - DISPLAYS ACTIVATED DEVICE AT THE FIRE COMMAND STATION AND AT THE REMOTE ANNUNCIATOR.
 - ACTIVATES THE CENTRAL OFFICE TRANSMITTER TO NOTIFY THE CENTRAL OFFICE OF A "SUPERVISORY CONDITION".
- ACTIVATION OF A STAIR AREA SMOKE DETECTOR:
 - DISPLAYS ACTIVATED DEVICE AT THE FIRE ALARM PANEL AND AT THE REMOTE ANNUNCIATOR.
 - ACTIVATES THE CENTRAL OFFICE TRANSMITTER TO NOTIFY THE FIRE DEPARTMENT.
 - ACTIVATES THE ASSOCIATED SMOKE EXHAUST FAN.
 - SHALL RELEASE ALL ELECTROMAGNETIC DOOR LOCKS AND DOOR HOLDERS THROUGHOUT THE BUILDING.
- ACTIVATION OF FIRE PUMP OR PUMP FAILURE:
 - DISPLAYS ACTIVATED DEVICE AT THE FIRE ALARM PANEL AND AT THE REMOTE ANNUNCIATOR.
 - ACTIVATES THE CENTRAL OFFICE TRANSMITTER TO NOTIFY THE FIRE DEPARTMENT.

NOTES:

- FANS BEING SHUTDOWN BY FIRE ALARM SYSTEM SHALL NOT BE AUTOMATICALLY RESTARTED UPON RESET OF FIRE COMMAND STATION AS PER NYC FIRE DEPARTMENT.
- FIRE ALARM PANEL SHALL BE LOCKED WITH "2642" KEY LOCK CYLINDER.
- FIRE ALARM PANEL SHALL BE PROVIDED WITH STATUS OF ALL FANS BEING SHUT DOWN (ON/OFF).
- CONTRACTOR SHALL FURNISH/INSTALL SMOKE DETECTORS FOR ALL ELECTRIC CLOSETS, TEL. CLOSETS, AND MECHANICAL CLOSETS OVER 75 SQ. FT.
- CONTRACTOR SHALL FURNISH/INSTALL DUCT SMOKE DETECTORS, SAMPLING TUBES, AND REMOTE L.E.D.S FOR ALL SUPPLY FANS GREATER THAN 2000 CFM AND RETURN FANS GREATER THAN 15,000 CFM.
- CONTRACTOR SHALL FURNISH/INSTALL FLASHING FIRE SIGN AT THE FIRE ALARM PANEL.



SPRINKLER/SMOKE DETECTOR ALARM RISER DIAGRAM

FIRE ALARM NOTES:

FIRE ALARM OPERATION:

- FIRE ALARM PANEL SHALL PROVIDE CONTINUOUSLY SUPERVISED MONITORING OF ALL SYSTEMS FOR OPENS, SHORTS AND GROUNDS, EXCEPT ISOLATED SMOKE DETECTORS.
- ACTIVATION OF A SMOKE DETECTOR SHALL CAUSE NOTIFICATION TO CENTRAL STATION AFTER THE SMOKE DETECTOR PERFORMS VERIFICATION.
- THE SPRINKLER SYSTEM CONTRACTOR AND THE FIRE ALARM SYSTEM CONTRACTOR SHALL FILE & COORDINATE THEIR SYSTEMS WITH THE FIRE DEPARTMENT AND SHALL OBTAIN ALL APPROVALS AND PAY ALL FEES.
- UPON ALARM PANEL ENTERING THE ALARMED MODE, ALARM INDICATING DEVICES SHALL BE ACTIVATED. COORDINATE WITH EQUIPMENT REQUIREMENTS.
- CONTRACTOR SHALL PROVIDE ALL NECESSARY ADDITIONAL RELAY DEVICES OR POWER TRANSFORMERS FOR PROPER OPERATION OF THE SYSTEM.
- BATTERY BACKUP SHALL PROVIDE A MINIMUM OF 24 HRS. OPERATION WITH A 10 MINUTE ALARM AT THE END OF 24 HOURS.
- ALL WIRING SHALL BE IN ACCORDANCE WITH NFPA CODES 70, 72, 72E, AS WELL AS LOCAL AND STATE CODE REQUIREMENTS. ALL WIRING SHALL BE CONCEALED AND SHALL BE FLEXIBLE RATED TYPE WITH TEFLO JACKET.
- NEW FIRE ALARM SYSTEM SHALL BE TESTED IN ACCORDANCE WITH NFPA CODES 70, 72, 72E, AS WELL AS ALL LOCAL AND STATE CODE REQUIREMENTS.
- ENTIRE FIRE DETECTION AND ALARM SYSTEM SHALL BE PROVIDED AND INSTALLED BY THIS CONTRACTOR. THIS SHALL INCLUDE ALL NECESSARY TIES WITH THE AUXILIARY CONTACTS.
- CONTRACTOR SHALL PROVIDE ALL ADDITIONAL APPURTENANCES AS REQUIRED FOR A COMPLETE AND OPERABLE SYSTEM. MODEL NUMBERS GIVEN MAY NOT INCLUDE ALL SPECIFIC REQUIRED ACCESSORIES FOR COMPLETE INSTALLATION.
- COORDINATE REQUIRED NUMBER OF HEAT AND SMOKE DETECTORS WITH FLOOR PLANS.
- PROVIDE A DEDICATED PHONE LINE AND CONNECT TO MUNICIPALITY RESPONSIBLE FOR FIRE CONTROL.

FIRE ALARM LEGEND AND SCHEDULE			
SYMBOL	MANUFACTURER	CATALOG #	DESCRIPTION
SSDF	EDWARDS	QS-1	MICROPROCESSOR BASED FIRE ALARM CONTROL PANEL AND INITIATING DEVICE CIRCUITS, 2 CLASS "B" INDICATING APPLIANCE CIRCUITS, ALARM VERIFICATION, WALK THROUGH TEST, POWER SUPPLY, STAND-BY BATTERY, AUTOMATIC BATTERY CHARGER, BROWN OUT SUPERVISION OF A/C POWER, DISCONNECT SWITCHES, FLUSH MOUNTING, PROVIDE ALL NECESSARY DEVICES NOT SPECIFICALLY LISTED FOR A COMPLETE AND OPERABLE SYSTEM.
S	EDWARDS	SIGA-PS	INTELLIGENT PHOTOELECTRIC SMOKE DETECTOR
H	EDWARDS	284B-PL	CONVENTIONAL HEAT SENSOR (135 C OR 200 C AS NOTED)
TS	VIKING	-	TAMPER SWITCH
FS	VIKING	-	FLOW SWITCH
MM	-	-	MOTOR MODULE
R	-	-	RELAY
PR	-	-	PUMP RUNNING RELAY
PF	-	-	PUMP FAIL RELAY
F	-	-	MANUAL PULL STATION
DGP	-	-	DATA GATHERING PANEL
TB	-	-	TERMINAL BOX
FCD	-	-	FUSE CUT-OUT SWITCH

GENERAL NOTES

- WHERE LOCAL BRANCH CIRCUITING IS NOT SHOWN ALL OUTLETS, RECEPTACLES LIGHTING FIXTURES, ETC. WITH THE SAME BRANCH CIRCUIT NUMBERS SHALL BE INTERCONNECTED WITH EACH OTHER USING BRANCH CIRCUITING AS DESCRIBED IN THE SPECIFICATIONS FROM CLOSEST OUTLET EXTEND BRANCH CIRCUITING HOMERUN TO PANEL AS NOTED. ALL BRANCH CIRCUITING SHALL BE RUN CONCEALED UNLESS OTHERWISE NOTED.
- WIRING FOR HOMERUNS TO PANELS UP TO 80' SHALL BE # 12 AWG MINIMUM. WIRING FOR HOMERUNS OVER 80' SHALL BE # 10 AWG MINIMUM. SEE ALSO PANEL SCHEDULES.
- NO MORE THAN ONE MULTI-WIRE BRANCH CIRCUITING SHALL BE RUN IN ANY RACEWAY. A MULTI-WIRE CIRCUIT SHALL EITHER BE A 1-PHASE, 2-WIRE CIRCUIT, A 1-PHASE, 3-WIRE CIRCUIT WITH COMMON NEUTRAL, OR A 3-PHASE, 4-WIRE CIRCUIT WITH COMMON NEUTRAL.
- PROVIDE BRANCH CIRCUITING AS REQUIRED TO ACHIEVE THE LIGHTING SWITCHING CONTROLS AS SHOWN ON THE DRAWINGS
- REFER TO ARCHITECTURAL DRAWINGS FOR EXACT LOCATIONS & MOUNTING HEIGHTS OF ALL LIGHTING FIXTURES & SWITCHES.
- REFER TO ARCHITECTURAL DRAWINGS FOR EXACT LOCATIONS & MOUNTING HEIGHTS & ALL RECEPTACLES, TEL/DATA OUTLETS & FIRE ALARM SYSTEM EQUIPMENT.
- FOR SYMBOLS SEE LEGEND.
- LOCATE ALL OUTLETS AT A HEIGHT OF 18" TO THE CENTERLINE OF THE JUNCTION BOX TO CLEAR RADIATION ENCLOSURES AND TO PROVIDE FOR HANDICAPPED ACCESSIBILITY.
- PROVIDE JUNCTION BOXES AS REQUIRED BY ELEVATOR EQUIPMENT, PROVIDE WITH CIRCUIT FOR CAR, LIGHTS, RECEPTACLES AND INTERCOM.
- ALL EXTERIOR WORK SHALL BE WEATHERPROOF PER (NEC) NATIONAL ELECTRICAL CODE.
- WIRING FOR ALL MOTORS SHALL INCLUDE FURNISHING AND INSTALLING DISCONNECT SWITCHES AND STARTERS AT MOTORS.

ABBREVIATIONS

ITEM	DESCRIPTION	ITEM	DESCRIPTION
AIC	AMPS INTERRUPTING	C	CONDUIT
AFF	ABOVE FINISHED FLOOR	CH	COUNTERHEIGHT
CB	CIRCUIT BREAKER	CLG	CEILING
CKTG	CIRCUITING	DISC	DISCONNECT
C/T	CURRENT TRANSFORMER	FLU	FLUORESCENT
EC	EMPTY CONDUIT	GFI	GROUND FAULT INTERRUPTING
GRD	GROUND	LTG	LIGHTING
INC	INCANDESCENT	NIC	NOT IN CONTRACT
MTD	MOUNTED	PLB	PROPERTY LINE BOX
NTS	NOT TO SCALE	S/S	SERVICE SWITCH
SEB	SERVICE END BOX	UG	UNDERGROUND
TEL	TELEPHONE	WP	WEATHERPROOF
UON	UNLESS OTHERWISE NOTED	EM	EMERGENCY

SUBJECT TO APPROVAL
THROUGHOUT THE PREMISES
FINAL APPROVAL
SUBJECT TO INSPECTION
Submitted Plan # **N-327-07**
Accepted by Electrical Section
Bureau of Fire Prevention
NYC FIRE DEPARTMENT
Subject to Letter of
Approval
MAR 14 2007
FIRE DEPARTMENT

APPROVAL
SUBJECT TO INSPECTION

EXAMINED FOR COMPLIANCE WITH SUB-CHAPTER 17 ARTICLE 5 BLDG CODE ONLY - APPLICANT IS RESPONSIBLE FOR COMPLIANCE WITH APPLICABLE BLDG CODE REFERENCE STANDARD



MAR
M. A. RUBIANO, P.C.
CONSULTING ENGINEERS
45 JOHN STREET, SUITE 903
N.Y., N.Y. 10038 (212) 732-7842

Copyright 2006 Brian E. Boyle, AIA.
All Rights Reserved.
Plans, Drawings, Specifications, Designs, Ideas shown herein, both in paper and electronic format are the property of Brian E. Boyle, AIA. They shall not be used, copied and/or reproduced, altered or disclosed by any person, firm, corporation or other entity without the prior written permission of Brian E. Boyle, AIA.

Brian E. Boyle A.I.A.
75 Spring Street 6th Flr
New York, NY 10012
212.334.7402
Fax 212.334.6112

General Notes

RECEIVED
MAR 16 2007
BFI CONSTRUCTION

104375258
DEPT. OF BLDGS.

2 ADD BASEMENT LABEL 02-21-07
1 ISSUED FOR FILING 11-01-06

No.	Revision/Issue	Date
The Deuce 534 West 42nd Street New York NY 10036		
FIRE ALARM NOTES, RISER LEGEND		

Scale	N/A	Sheet No.
Date	11-01-2006	FA-101
Drawn By	REM	