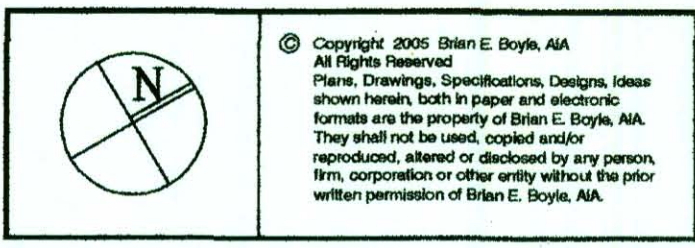
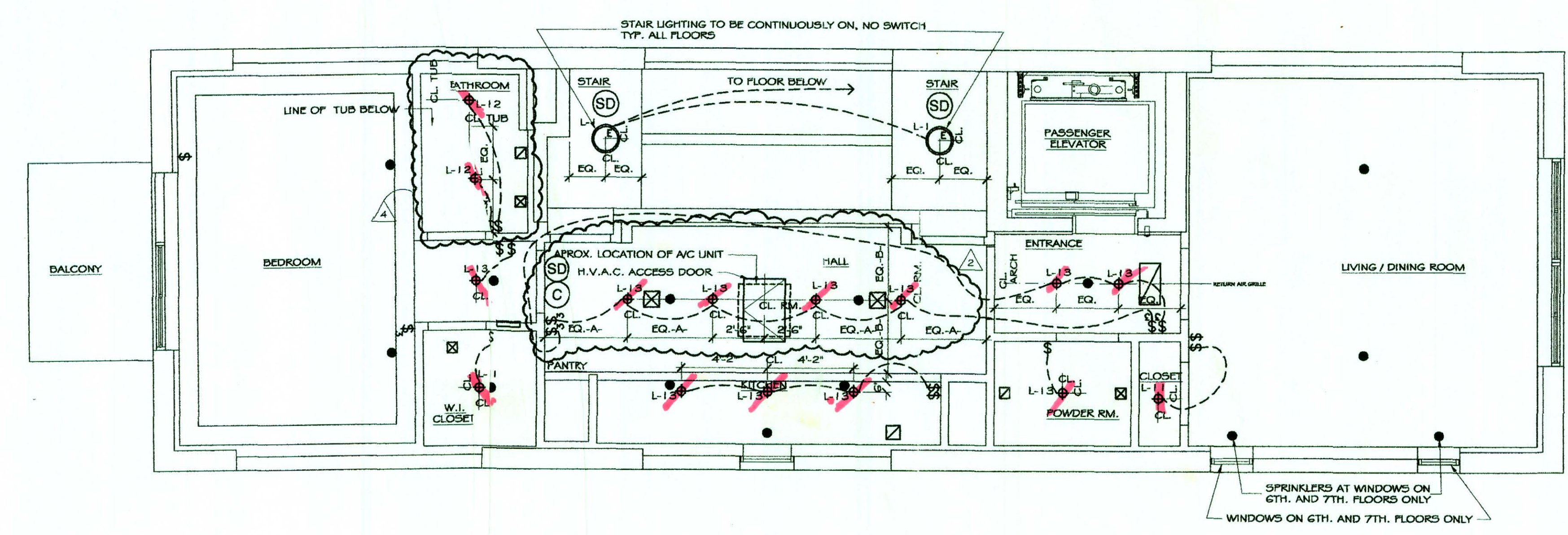


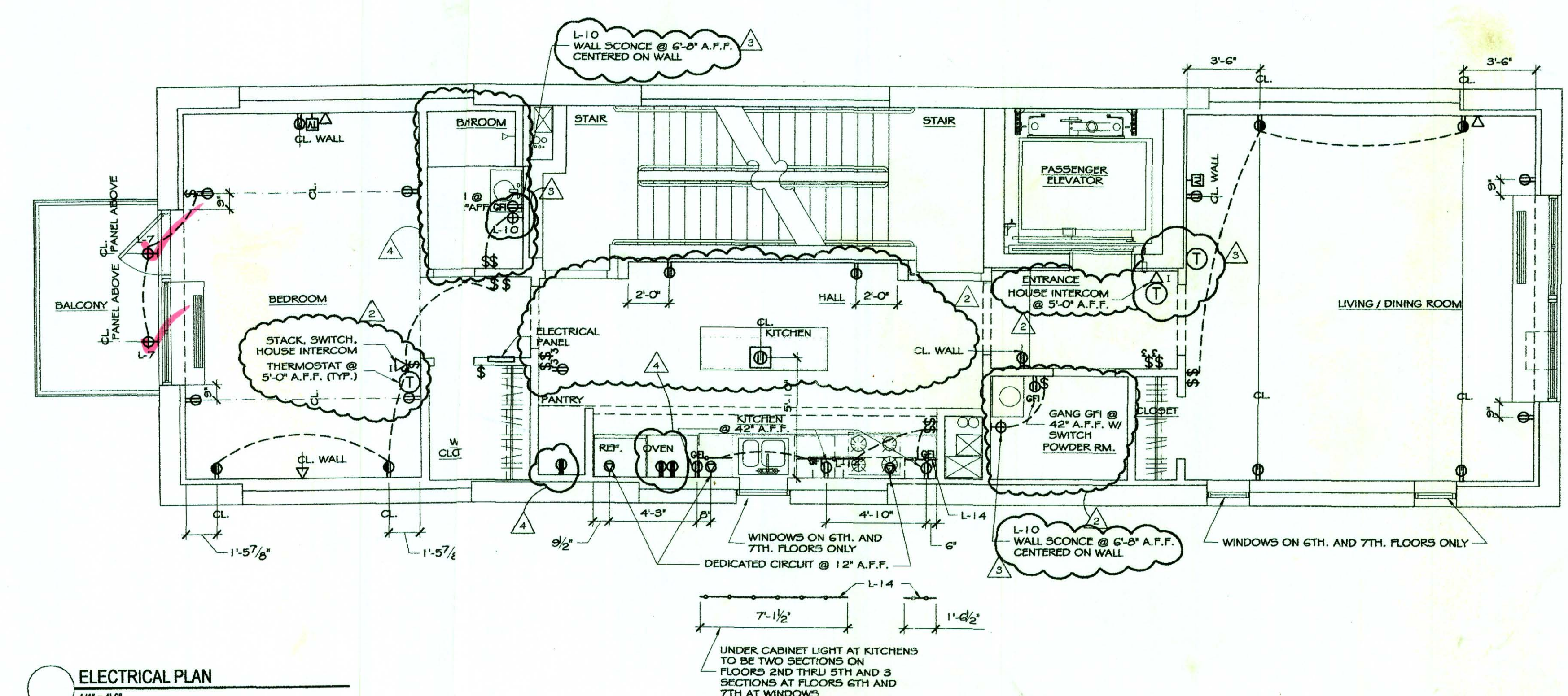
6 F.H.R.
 2-13 ITH HL 1 (2")
 2-11 - 1
 2-12 - 2
~~2-13~~
 1-1 - 1
 2-7 - 2



Brian E. Boyle A.I.A.
 75 Spring Street 8th Fl
 New York, NY 10002
 212.334.7400
 Fax 212.334.8112



LIGHTING PLAN
 1/4" = 1'-0"



ELECTRICAL PLAN
 1/4" = 1'-0"

- LEGEND**
- OUTLET W/ DEDICATED CIRCUIT @ 12" A.F.F.
 - SINGLE OUTLET @ 12" A.F.F., U.O.N.
 - DUPLEX OUTLET @ 12" A.F.F., U.O.N.
 - GROUND FAULT INTERRUPTER OUTLET @ 42" A.F.F., U.O.N.
 - DUPLEX OUTLET HALF HOT @ 12" A.F.F., U.O.N.
 - 220 VOLT OUTLET @ 12" A.F.F., U.O.N.
 - QUAD OUTLET @ 12" A.F.F., U.O.N.
 - FLOOR DUPLEX OUTLET
 - FLOOR TELEPHONE JACK
 - WALL SWITCH @ 30" A.F.F.
 - THREE WAY WALL SWITCH @ 30" A.F.F.
 - FOUR WAY WALL SWITCH @ 30" A.F.F.
 - JAMB SWITCH @ 8'-0" A.F.F.
 - KEYED SWITCH
 - SECURITY CARD READER
 - THERMOSTAT @ 5'-0" A.F.F.
 - TELEPHONE / DATA JACK @ 12" A.F.F.
 - HOUSE PHONE INTERCOM @ 5'-0" A.F.F.
 - SECURITY CAMERA
 - HANDICAP DOOR ACTUATOR
 - CABLE JACK @ 12" A.F.F.
 - STRIP LIGHT
 - WALL SCONCE @ 5'-0" A.F.F.
 - JUNCTION BOX
 - SPRINKLER
 - 1" DIA. SURFACE MOUNTED FLUORESCENT LIGHT FIXTURE
 - 1" DIA. SURFACE MOUNTED FLUORESCENT W/ EMERGENCY BATTERY PACK
 - RECESSED LIGHT FIXTURE
 - DIRECTIONAL LIGHT FIXTURE
 - SMOKE DETECTOR
 - CARBON MONOXIDE DETECTOR
 - EXIT LIGHT
 - EMERGENCY BATTERY POWERED LIGHT
 - RETURN AIR GRILLE OR EXHAUST
 - AIR DIFFUSER
 - 2" DIA. SURFACE MOUNTED FLUORESCENT LIGHT FIXTURE
 - SURFACE MOUNTED FLUORESCENT LIGHT FIXTURE @ 8'-0" A.F.F. UNLESS OTHER WIRE NOTED
 - ACCESS DOOR

- 4 REVISION ISSUED FOR CONSTRUCTION 09/20/07
- 3 REVISION ISSUED FOR CONSTRUCTION 02.01.07
- REVISION ISSUED FOR CONSTRUCTION 12.01.06
- 2 REVISION ISSUED FOR CONSTRUCTION 11.17.06
- ISSUED FOR PRICING 07.26.06

No.	Revision/Issue	Date
<p>The Deuce 534 W.42nd Street New York NY 10036</p>		
<p>ELECTRICAL & LIGHTING PLAN FLOORS THREE THROUGH SEVENTH</p>		
Scale	1/4" = 1'-0"	Sheet No.
Date	07.26.06	E-205
Drawn By	CCC	

RECEIVED
 SEP 21 2007
 BFI CONSTRUCTION