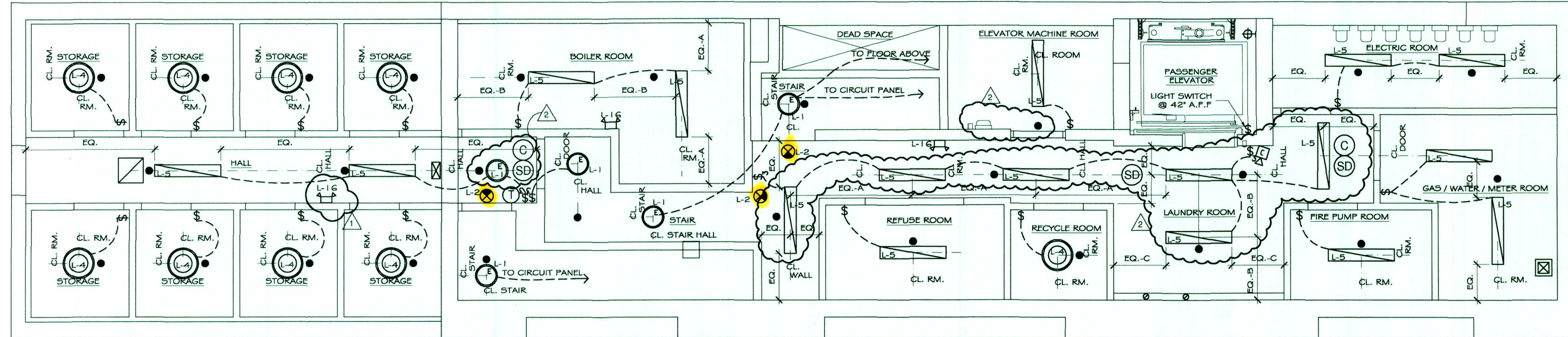
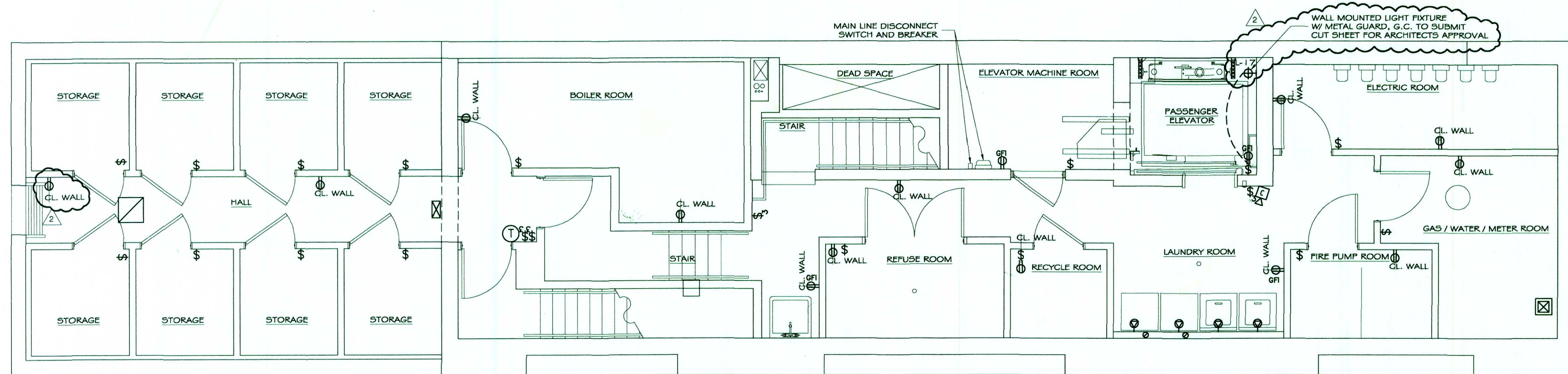


Brian E. Boyle A.I.A.

75 Spring Street 8th Fl.
New York, NY 10002
212.334.7402
Fax 212.334.6112



LIGHTING PLAN
1/4" = 1'-0"



ELECTRICAL PLAN
1/4" = 1'-0"

- LEGEND
- OUTLET W/ DEDICATED CIRCUIT @ 12' A.F.F.
 - SINGLE OUTLET @ 12' A.F.F., U.O.N.
 - DUPLEX OUTLET @ 12' A.F.F., U.O.N.
 - GROUND FAULT INTERRUPTER OUTLET @ 42' A.F.F., U.O.N.
 - DUPLEX OUTLET HALF HOT @ 12' A.F.F., U.O.N.
 - 220 VOLT OUTLET @ 12' A.F.F., U.O.N.
 - QUAD OUTLET @ 12' A.F.F., U.O.N.
 - FLOOR DUPLEX OUTLET
 - FLOOR TELEPHONE JACK
 - WALL SWITCH @ 30' A.F.F.
 - THREE WAY WALL SWITCH @ 30' A.F.F.
 - FOUR WAY WALL SWITCH @ 30' A.F.F.
 - JAMB SWITCH @ 8'-0" A.F.F.
 - KEYED SWITCH
 - SECURITY CARD READER
 - THERMOSTAT @ 5'-0" A.F.F.
 - TELEPHONE / DATA JACK @ 12' A.F.F.
 - HOUSE PHONE INTERCOM @ 5'-0" A.F.F.
 - SECURITY CAMERA
 - HANDICAP DOOR ACTUATOR
 - CABLE JACK @ 12' A.F.F.
 - STRIP LIGHT
 - WALL SCOOPS @ 5'-0" A.F.F.
 - JUNCTION BOX
 - SPRINKLER
 - 18" DIA. SURFACE MOUNTED FLUORESCENT LIGHT FIXTURE
 - 18" DIA. SURFACE MOUNTED FLUORESCENT W/ EMERGENCY BATTERY PACK
 - RECESSED LIGHT FIXTURE
 - DIRECTIONAL LIGHT FIXTURE
 - SMOKE DETECTOR
 - CARBON MONOXIDE DETECTOR
 - EXIT LIGHT
 - EMERGENCY BATTERY POWERED LIGHT
 - RETURN AIR GRILLE OR EXHAUST
 - AIR DIFFUSER
 - 22" DIA. SURFACE MOUNTED FLUORESCENT LIGHT FIXTURE
 - SURFACE MOUNTED FLUORESCENT LIGHT FIXTURE @ 8'-0" A.F.F. UNLESS OTHERWISE NOTED
 - ACCESS DOOR

ISSUED FOR CONSTRUCTION 02.01.07
ISSUED FOR CONSTRUCTION 12.01.06
2 REVISION ISSUED FOR CONSTRUCTION 11.17.06
1 REVISED ISSUED FOR PRICING 08.09.06
ISSUED FOR PRICING 07.26.06

| No. | Revision/Issue | Date |
|-----|----------------|------|
| | | |

The Deuce
534 W.42nd Street
New York NY 10036

ELECTRICAL &
LIGHTING PLAN
CELLAR

| Scale | 1/4" = 1'-0" | Sheet No. |
|----------|--------------|-----------|
| Date | 07.26.06 | E-202 |
| Drawn By | CCC | |